

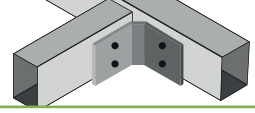
When installing Builddeck Heritage, Vintage or Classic - **400mm** gap between joist centres.  
When installing Victoria - **300mm** gap between joist centres (See relevant installation guide)

**30mm** gap between joists supporting abutted boards.

When installing **72mm** joist - **1200mm** gap between pedestal centres.  
When installing **38mm** joist - **600mm** gap between pedestal centres.

For drainage, sub frame height must fall **12.5mm** for every **1000mm** length.

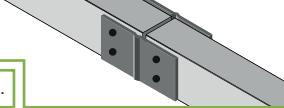
Connect main joists to the perimeter using angled (L-Shaped) joist connectors.



Always leave a **4mm** expansion gap between all joists.

Insert **400mm** spacer profiles where required, to ensure joists are adequately spaced.  
Connect using angles (L-Shaped) joist connectors.

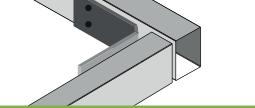
Connect main joist lengths together end-on-end using a straight joist connector (leaving a **4mm** expansion gap)



All joins in the main joists must be supported by a pedestal.

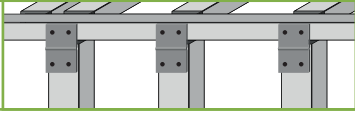
Clip the substructure onto the adjustable pedestals ensuring all is set to the required level as well as allowing for adequate drainage.

Connect perimeter joists using angled (L-Shaped) joist connectors internally.

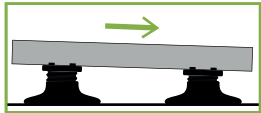


Install decking in accordance to relevant installation guide.

Connect vertical profiles to support the perimeter joists using straight joist connectors.



**IMPORTANT** - Always leave a **4mm** expansion gap between all connecting joists.



For water drainage, the height of the decking must fall **12.5mm** for every **1000mm** length.  
Always pitch down the length of the boards away from any buildings or structures.



For rough or uneven surfaces, place a concrete slab beneath the pedestals for levelling support.



To apply multi-directional profiles, simply clip joists into place ensuring to leave a **4mm** expansion gap between the two.



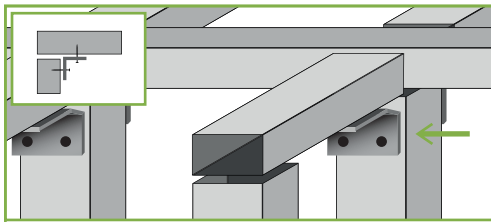
To adjust the pedestal height, simply twist to raise or lower the head.



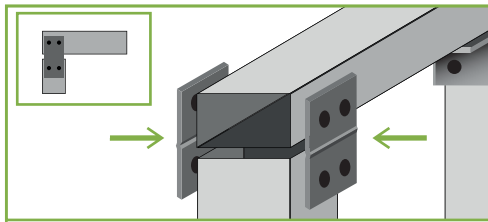
When installing on a sloping area, simply position the pedestal into place. Once the joists are clipped in the adjustable head will level itself.



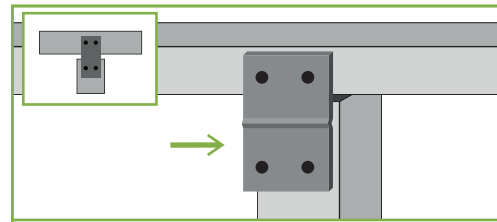
For ease and quick installation, Builddeck aluminium joists simply clip into the pedestal head.



To create steps, cut profiles to required lengths, and connect to down turn supports (fixed to perimeter joist) using angled (L-Shaped) joist connectors.



To create down turn for steps, cut profiles to required lengths, and connect using L-Shaped brackets.



If down turns are required, cut vertical profiles to required length, and connect to perimeter joist using straight joist connectors.

To finish the corners with 45° angles, set the joists according to figure 1 below. Joists **1** and **2** should be set to the full width of the board final board along the edge. Joist **3** should be positioned at the start of the main boards length, taking into account required expansion gaps (see relevant decking installation guide) and must not allow an over hang of more than **20mm**. From joist **3** continue gaps as per relevant decking installation guide.

Figure 1

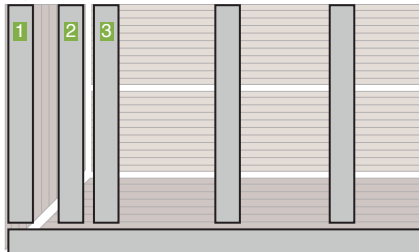
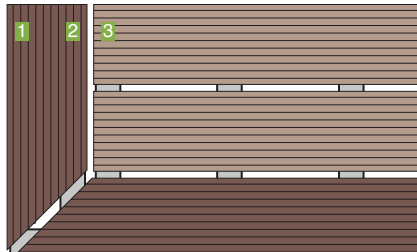


Figure 2



For decking installed at 45° in entirety, the maximum gap between joists should be set at **250mm** centre to centre.

